

# 2008 Corporate Catalogue



*Established 1931*

## **Balls ~ Apparel ~ Headgear ~ Accessories**

Choose from popular golf brands like Ahead, Antigua, Callaway, Canterbury, Cutter & Buck, Hollas, Imperial, Izod G, MXM Accessories, Nike Golf, Nivo, Ogio, Oxford Golf, Precept, Prodigy Headgear, Pukka Headwear, Second Skin, Sun Mountain, Sundog, Tehama, Top-Flite, Zero Restriction, and more

### **St. Boniface Golf Club**

100 Youville St.

Winnipeg, MB

R2H 2S1

Telephone: (204) 233-2497 Ext. 11

Contact: Geoff Kehler Head Professional



We are a proud member of the Green Grass One network of over 300 premier independent professional shops in Canada. Our membership in this network provides us with access to industry-leading products, pricing and services of Canada's largest independent golf retail group.



## GOLF BALLS

**Callaway**  
GOLF

### Tour i & iX

- 4 piece, 2 core technology with tungsten-infused outer core. Shifts weight away from the centre of the ball driver spin for maximum distance. iX comes with a softer core formulation that generates increased short game spin.

### HX Hot & Hot Bite

- HX Hot has an improved high-resiliency core to improve what already produced high velocity distance.
- HX Bite is a 3-piece performance golf ball that combines scorching distance with green-grabbing stopping power and control.

### Big Bertha

- Making distance feel soft via an ultra-low compression core.

### Warbird

- 2-piece, ionomer cover distance ball.



**NIKE GOLF**

### Nike One Platinum

- Reengineered for longer distance, enhanced control and workability. Featuring new Power Transfer Technology combined with multi-component construction with softened urethane cover.

### Nike One Black

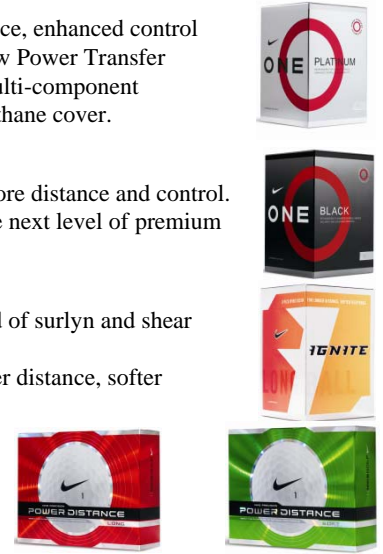
- Improved aerodynamics for more distance and control. Nike One Black establishes the next level of premium distance performance.

### Ignite

- New polysoft cover is a blend of surlyn and shear resistant polymer.
- 3 piece hybrid design for longer distance, softer response.

### Power Series Long & Soft

- Two piece distance ball.
- 2 styles to choose from.



**TOP FLITE**



### Top-Flite Series Golf Balls

- By the dozen or price point-friendly 15 packs. The Top-Flite family of golf balls have a multitude of performance products.

## GOLF BAGS

### Ogio Grom CC

Eight-pocket engineering feat, outfitted with Ogio's patent-pending anti-twist Torque Strap, its popular walking-accessible water bottle holster and the zipperless ball pocket. (style#712501)

#### Colors:

Apple	Black/Silver
Fire/Silver	Indigo/Khaki
Black/Copper	Olive/Khaki



### Ogio Vaporlite CC

3.8 lb. 9" top with full length three way dividers. Lite mesh shoulder strap. User-friendly water bottle holster and 5 pockets. Detachable lower pocket panel for embroidery application. (style# 712504)

#### Colors:

Juice Garnet/ Fire Flame/Khaki Black/Petrol Navy/Wite



### Warbird XTT

9" oval top with 7-way full length divider. 6 pockets including a valuables pocket and insulated cooler pocket. Izzo dual strap and logo availability on side garment zip off pocket.

#### Colors:

Black	Orange
Blue	Green
Red	Light Blue



### NX-G Custom Golf Bags

Custom design your own NX-G bag with no minimums and no set up charges. 8" to 11" staff bags available with full dividers and multiple embroidery locations per bag. Assortment of color blocks available with industry leading turnaround times.



**PRECEPT**

**BRIDGESTONE**  
GOLF

### Bridgestone e5+

- Designed for players who want more height and distance off the tee. Unique 2-piece urethane cover with large kinetic energy core. (style# 9510)



### Bridgestone e6+

- Innovative anti spin/extra velocity inner cover that provides a straighter ball flight with longer distance, carry and roll. (style# 9710)



### Precept MC Lady

- High performance 2-piece ball designed for golfers with low to moderate swing speeds. Soft feel with low spin rate for maximum distance. (style# 7000)



### Precept Laddie X

- 2-piece surlyn cover. Explosive velocity off the driver with high launch and low spin characteristics. (style# 5910)



# MEN'S APPAREL

## T.ZOD C



### G Flex Polo Short Sleeve Knit

Updated, classic 'better than basic' polo made of 97% cotton, 3% spandex. Performance sportswear that allows ease of movement. Ladies matching style available. (style# 601100)

**Colors:** Orange Crush, Black, Citrus, Crimson, White, Navy, Clearwater Blue

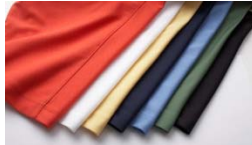
**Sizes:** M-XXL

### Zone FX G:1

100% polyester body mapping knit. G-Fresh moisture wicking fabric, antibacterial finish with SPF 40. (style# 601110)

**Colors:** Black, Storm, Maize, Lava, White, Baltic, Basil

**Sizes:** M-XXL



### Zone FX G:3



100% polyester textured body mapping knit, climate zone engineered. G-Fresh moisture wicking fabric, antibacterial finish with SPF 40. (style# 601105)

**Colors:** White, Clearwater Blue, Jade, Black

**Sizes:** M-XXL



### RainFlex Full Zip Jacket



Entirely new for 2008 RainShield fabric protector that repels water and stains while remaining breathable. A premium performance rain jacket that continues to be a PGA Tour favorite. (style# 729115)

**Colors:** Black, Russet/Black, Navy

**Sizes:** M-XXL

### Micro J Jacket

Packaged in a fun 6.5"x2.5" tube! Teflon coated nylon, taped seams, lightweight & waterproof. (style# 729000)

**Colors:** White, Dazzling Blue, Black

**Sizes:** M-XXL



## CUTTER & BUCK.

### Championship Polo

60% cotton/40% poly pique; CB DryTec fabric. Moisture control, keeps you cool & comfortable. Available in co-ordinating women's style. (style# C1263)

**Colors:** Black, Navy Blue, Red, Lotus Yellow, Sea Blue, Tour Blue, Putting Green, Spice

**Sizes:** M-XXL



## ANTIGUA.



### Performance Excellence

100% micro polyester performance fabric. Mini mesh, open sleeve and 3 button placket; great value! (style# A120101)

**Colors:** White, Navy, Aurora, NC Blue, Dark Red, Sahara, Dark Pine, Dark Royal, Cabernet, Mid Pink, Black, Mango

**Sizes:** S-XXXL

### Quick

100% micro polyester performance textured knit. Contrasting textured mesh inserts enhance this 2-button placket 'fashionable' polo. (style# A122111)

**Colors:** White/Silver, Navy/White, Black/White, Lt Curry/White, Lt Chili/White, Lt Ginger/White

**Sizes:** M-XXL



### Superb

100% micropolyester Desert Dry moisture management solid textured closed mesh striped short sleeve polo with contrast coverstitch, 3-button placket, self collar and raglan open sleeves. (style# A122105)

**Colors:** Grenadine/White, Sahara/White, Delta/White, Emerald/White, Navy/White, Black/White, White/Silver

**Sizes:** S-XXXL



### Official Windshirt

100% polyester woven raglan short sleeve with half zip placket, reflective tape zip pockets, underarm mesh gusset detail and adjustable bungee double toggle bottom. Antigua performance crest on right sleeve. (style# A522104)

**Colors:** White, Silver, Navy, Dark Red, Black, Sahara

**Sizes:** M-XXL



### Explorer



100% polyester bonded microfiber woven and micro fleece long sleeve full zip jacket. Many features including multiple pockets to protect you from the elements and remain functional for golf. (style# A522102)

**Colors:** Navy, Black, Silver, Dark Red, Sahara

**Sizes:** M-XXL

### Axis

94% polyester/6% spandex closed mesh. This pullover is great for all sports and sports enthusiasts alike. (style# A524103)

**Colors:** Navy, Black, Silver, Dark Red

**Sizes:** M-XXL



# MEN'S APPAREL



## 2 Tone Drywick Zip



Quarter zip with fashion forward color blocking. Heat generated moisture is moved away from the skin. A breathable membrane diffuses and disperses moisture more effectively than cotton. (style# 0880)

**Colors:** Black/Silver Silver/Black Red/Silver  
Navy/Silver Orange/Silver Lime/Silver

**Sizes: S-XXL**

## Coolon Full Zip Jacket

100% polyester, with six-channel fabric structure it allows for the fastest moisture movement away from the skin. Stand up collar and contrast seam styling make this a great addition to every golfer's wardrobe. (style# 0893)



**Colors:** Black/Silver Silver/Black

**Sizes: S-XXL**

## Premier Jacket



Soft shell fabrication featuring a DuPont Teflon fabric protector, great for resisting both water and stains. (style# 0683)

**Colors:** Black Navy

**Sizes: S-XXL**

## HS 2000 ¾ Sleeve Jacket

This ¾ sleeve pullover features 8,000mm's of water proof protection. Stylish color blocking makes it a great piece for warmth, wind and rain. (style# 0845)



**Colors:** Black/Silver Silver/Black  
Navy/Silver Orange/Silver

**Sizes: S-XXL**

## Coolon Golf Shirt



The Coolon Golf Shirt makes use of the same powerful polyester fiber from the jacket. Great for moisture management and a soft hand on the skin. (style# 0733)

**Colors:** Black White Orange Navy Red Lime Apple Green

**Sizes: S-XXL**

## 2 Tone Coolon Golf Shirt

All the great benefits of Coolon fabrication with fashion forward cut and sew color blocking. Great fashion value! (style# 0806)



**Colors:** Black/Silver Lime/Silver Orange/Silver  
Navy/Silver Red/Silver

**Sizes: S-XXL**



## Mayola Softshell Jacket

Polyester twill non-pilling micro fleece jacket. Both water repellent and windproof. (style# 5209)



**Colors:** Black

**Sizes: M-XXL**



## Dri-Fit Tech Polo



100% polyester Dri-Fit with 30 SPF. The ultimate athletic basic polo. (style# 128898)

**Colors:** White Sport Red  
University Blue Orange Ice

**Sizes: S-XXL**

## Dri-Fit UV Blocked Polo

Solid knit collar and open sleeves. 100% polyester, up to 30 UPF. (style# 244584)

**Colors:** Black Vivid Green Orange Ice  
White University Blue Dark Obsidian

**Sizes: S-XXL**



## Dri-Fit Tech Core Stripe



100% polyester fabrication up to 30 UPF. This subtle striping will be flattering to all. (style# 256650)

**Colors:** Black Dark Obsidian University Blue  
Sport Red Vivid Green Orange Ice

**Sizes: S-XXL**

## Sphere Dry Polo

This luxurious blend of 89% polyester with 11% spandex is the ultimate in comfort against your skin. (style# 256488)

**Color:** Black

**Sizes: S-XXL**



## Dri-Fit Tech Long Sleeve Polo



This is the long sleeve companion piece to Nike's #1 selling polo. (style# 231352)

**Colors:** White Black

**Sizes: M-XXL**



## Straight Down Baltusrol



100% cotton triple sueded ½ zip with contrasting piping. (Style# 60172)

**Colors:** Khaki Steel Black

**Sizes: S-XXL**

# MEN'S APPAREL

## TEHAMA™

### Incredible Pique Polo

This 60% pima cotton and 40% micro polyester pique polo features all the softness of cotton as well as the color fastness and moisture management properties of polyester. (style# 201701)

**Colors:**

Black White Midnight Nassau

**Sizes: M-XXL**

Red



### Hang'em Dry Polo

Micro pima jet pique. Maximum comfort with technologically advanced yarns. Lightweight construction that keeps you cool and dry. Feels like cotton against your skin, while having the moisture management and color retention properties of polyester. (style# 201830)

**Colors:**

Black Lemon  
 Cream Pear  
 Wheat Merlot  
 Forrest Pumpkin  
 Navy Azure

**Sizes: S-XXL**



## OXFORD GOLF

### Barnsley CoolMax Windowpane

100% polyester windowpane pique. Coolmax fabric blend with tonal windowpane detailing. (style# OX1918)

**Colors:**

Sunkissed Ultra Marine Lake Blue Curacao Blue

**Sizes: S-XXL**

Cardinal Lemon Watermelon Limeade



### Cambridge Solid Lisle Polo

Soft, double mercerized cotton shirt with silken luster. Three laser-engraved button placket and an open sleeve. (style# OX1810)

**Colors:**

Black Bermuda Pink Boysenberry

Classic Navy Flag Red Marigold

**Sizes: S-XXL**

Periwinkle Sky Blue Magenta Red



## Lanctôt

design | service | passion

### Jack Nicklaus Cool Plus Polo

100% Polyester cool plus basic pique stripe polo. Moisture wicking, anti-bacterial with UV protection makes it an 'all in one' polo. (style# JN1186)

**Colors:**

White Red Navy

**Sizes: S-XXL**



### Nivo Basic Polo

Polyester birds-eye pique moisture wicking fabric with anti-bacterial protection. (style# NI8110107)

**Colors:**

Black Blue Green Navy

**Sizes: S-XXL**

Red White Dijon



### Dry Swing Pique Polo

96% Polyester 4% Spandex solid pique polo. Easy care wash and wear garment that will not fade or wrinkle. Ladies matching style available. (style# 1050)

**Colors:**

White Butter Mango Red  
 Black Reflex Chambray Celadon  
 Navy Blue

**Sizes: S-XXL**



### Dry Swing Fish Eye Polo

96% Polyester 4% Spandex 5.3 ounce fish eye textured polo with Johnny collar. Ladies matching style available. (style# 1069)

**Colors:**

Black Apple Green  
 White Snapper Red

**Sizes: S-XXL**

Reflex Blue



### Splash Gear Full Zip Waterproof Jacket

Lightweight waterproof shell fabric with storm collar, waterproof hand pockets & patented expansion back pleats. (style# 0110)

**Colors:**

Camel/Black

**Sizes: S-XXL**

Red/Black

### Splash Gear Waterproof Pants

Lightweight waterproof shell jacket with elasticized waistband, waterproof side zips and zippered pass-throughs to your slacks beneath. (style# 0135)

**Colors:** Black

**Sizes: S-XXL**



# LADIES' APPAREL

## IZOD

### Zone FX G:1

100% cool plus yarn. G Fresh moisture wicking fabric in colors women love to wear. Climate zone engineered to suit any level of play. (style# 501108)

**Colors:** Black White Fuchsia Periwinkle  
**Sizes: S-XL**



### G Flex Polo

color-happy and comfortable! Styled perfectly for a feminine fit. Enhanced with SPF and a touch of spandex. 95% cotton, 5% spandex. (style# 501100)

**Colors:** Black Navy Petunia White  
 Crimson Citrus Clearwater Blue



## ANTIGUA

### Excellence Polo

This companion piece to the men's Excellence gives you great matching possibilities. Sleeveless option available. Feminine, not fitted in silhouette. (style# A420106)

**Colors:** Black Navy Aurora White NC Blue Dark Red Sahara Cafe Ice Ginger Indigo And more!  
**Sizes: S-XXL**



### Explorer

100% polyester bonded microfiber woven and micro fleece long sleeve full zip jacket. (style# A424202)

**Colors:** White Navy Black Dark Red Sahara  
**Sizes: S-XL**



## SECOND SKIN

### Drywick 2-ToneZip

Quarter zip with protective collar and contrast stitching. Heat generated moisture is moved away from the skin. A breathable membrane diffuses and disperses moisture more effectively than cotton. The result is you stay cooler and dryer. (style # 0881)

**Colors:** Black/White Red/White Blue/White  
**Sizes: S-XL**



### Coolon Jacket

A powerful polyester fabric, which draws heat generated moisture from the skin, allowing you to stay dry and comfortable. (style# 0894)

**Colors:** Black/White Red/White Blue/White  
**Sizes: S-XL**



## TEHAMA

### Hang-em Dry Pique

Micro pima jet pique. Maximum comfort with technologically advanced yarns. Lightweight construction that keeps you cool and dry. Feels like cotton against your skin, while having the moisture management and color retention properties of polyester. (style# 201830)

**Colors:** Black Azure Lemon Tomato White Blush  
**Sizes: S-XL**



## HOLLAS

### XFC Solid

This companion piece to the men's option is a great corporate outing or uniform piece. The nylon fabrication offers great breathability and color fastness. (style# 0611)

**Colors:** Black Red White Sky  
**Sizes: S-XL**



## abacus

### Mayola Softshell Jacket

Polyester twill non-pilling micro fleece jacket. Both water repellent and windproof. (style# 4209)

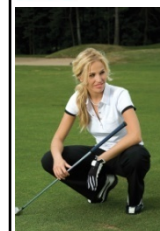
**Colors:** Black  
**Sizes: S-XL**



## n'vo

## Lanctôt

design | service | passion



### Nivo Tech Polo

Polyester spandex moisture wicking polo with UV protection. A fashionable and functional polo. (style# NI8210151)

**Colors:** White Acid Yellow  
**Sizes: XS-XXL**

# HEADGEAR



## Vintage Sandwich



Classic fit with cloth strap closure (metal grab). Crown is unstructured with a Vintage Twill fabric. (Style# C50MT5)

### Colors:

White/Slate	Sage/Bone	Navy/Red	Dark Green White
White/Navy	Rust/White	Navy/Gold	Deep Red Black
White/Cobalt	Red/Navy	Navy/Bone	Bone/Sage
White/Black	Khaki/White	Gold/Navy	Bone/Navy
Black/Rust	Black/Khaki		

## Extreme C-Stitch

Extreme fit with velcro tab. Unstructured crown with Vintage Twill Fabric. (style# E45MT6)

### Colors:

Black/Khaki	Navy/Bone	Bone/Navy
Cadet/Navy	Maize/White	



## Imperial The Original

Relaxed collegiate fit. Premium twill, fabric closure with rustproof buckle. (style# X210)

### Colors:

Aztec	Breaker Blue	Butter	Celtic	Cotton Candy
Black	Brown	Canary	Claret	Grey
Pine	Navy	Nantucket	Moss	Khaki
Pumpkin	Olive	Putty	Red	Sage
Sapphire	Sky	White		



## Imperial "It Fits" Performance Cap

Mid-Structured Fit. Poly-Tech Fabric, wicks moisture and dries quickly. Lightweight and breathable. (style# 1068)

### Colors:

Black/Khaki	Khaki/Black	Navy/White
Orange/Navy	Royal/White	White/Navy



## Prodigy Headwear

Washed cotton twill solid with contrast stitching and bill tape. Relaxed low profile fit and adjustable velcro closure. (Style# P353)



### Colors:

Black/White	Khaki/Black	White/Navy
Navy/White	Pumpkin/Navy	Sky/Navy

## The Showcase

Washed cotton twill, structured with buckram. Adjustable velcro closure, available in White/Black only. (style# P651)



Constructed using the best techniques and materials available, Pukka hats provide unmatched quality, optimal comfort and the ultimate fit. As an industry trendsetter, we continue to deliver the latest advances in custom headwear. Be original with your hat design. Graphic placement anywhere on the cap. Custom applique graphics available.



# TRAVEL ACCESSORIES

## Ogio Layover



Airline carry on size; fits in overhead. 2 stage pullman handle, 2 low profile external pockets and smooth urethane wheels for optimum navigation. Includes a new 3" expansion zipper for new acquisitions on the return tip. (style# 108122)

### Colors:

Black	Black Pinstripe	<b>Minimum 12</b>
Red	Glenn Plaid	Brown Plaid

## Ogio All Terrain

Roomy enough to manage clothes, multimedia devices, and even shoes in their own side pocket, this duffel perfectly sized to fit under airline seats or in overhead bins. (Style# 108083)

### Colors:

Red Black Navy **Minimum: 12**



## Ogio Transporter



Enough structure to get your garments there the way you put them in despite your airline's best attempts otherwise. (Style# 611026)

### Colors:

Black **Minimum: 12**

## Ogio Terminal

Multiple grab handles; internal suit strap; interior mesh divider; large durable and quiet urethane wheels; internal compression strap; retractable pullman handle; interior reinforced base. (style# 108121)

### Colors:

Black	Black Pinstripe	<b>Minimum: 12</b>
Red	Glenn Plaid	Brown Plaid



## Cutler Sports Phone Holder & Wrist Purse

Ideal for member guest events and gift with purchase promotions. Great for on and off the course.

### Colors:

Black **No Minimum**



# GOLF ACCESSORIES AND GIFTWARE



## MXM Eagle Clip Tool

Streamline sleek design. (Style# DT635)

Colors: Antique Gold Silver **Minimum: 100**

## MXM Two Sided Collector's Coin

3 possible logo areas & removable ball marker. With gift box. (Style# DT500)

Colors: Antique Bras Gunsmoke Nickel Gold **Minimum: 50**



## Daphne's Headcovers

Fits oversized drivers over 100 to choose from. Beautiful plush animals, custom embroidery available with no minimums.



## Eco Golf Tees

Tees imprinted with text logo. Custom colors also available. Variable sizing from 2 1/8" up to 3 1/4". Available bagged or bulk. Biodegradable endurance tees.



## MXM 62" Square Umbrella

Square umbrella with vented corners. Handle features a customizable medallion. (style# GG6240)

Colors: Blue/Black Tan/Black Orange/Black Grey/Black Yellow/Black White/Black **Minimum: 24**



## MXM Tri-fold Scrubber Towel

100% cotton towel with embroidered logo. (style# TP1003)

Colors: Black Only **Minimum: 24**



## Pinecrest Personalized Woven Towel

Personalize each towel with you player's or events name. (style# PC1001)

Colors: Variety Available **Minimum: 48**

# Eyewear



## Sundog Custom Logo Promotional Program

1. Choose from our sunglass collection to meet your budget needs.
2. Choose your custom logo case and or accessories.
3. Customization options include hard and soft cases, sport clips and zipper pulls with your event course or company logo.



## Ahead Coaster Set with Display Box

Includes your custom logo on the outside of the box and inside all four coasters. (style# CSTBOX2)

Colors: Brown Case **No Minimum**



Framed image program from the summit group. Suitable memorabilia for any corporate event or auction.



## MXM Money Clip Billfold Wallet

Sleek design using Nappa Leather. Available in black only. (style# 1055)

Colors: Black **No Minimum**

# Gift Packaging



Fashion 16"x6"x12"

Petite 8"x4"x10"



Since 1857 / Depuis 1857

## Customized Bags for Corporate or Tournament Gifts

150 Petite Bags Custom Printed for \$249.99

150 Fashion Bags Custom Printed for \$279.97

Includes one color printing plates – Approx 15 printing color options to choose from. Includes hot stamping on both sides which allows you to put your club logo on one side and your tournament or corporate logo on the other side. Free ream of white tissue with every order (value \$10.50) Minimum 2 week lead time from art work approval



Colors

Brown Black Green Blue White Kraft

# Belts



Style #014052



## Belt with Laser Engraved Buckle

35mm width, 44" length leather strap with removable fashion plaque buckle. Buckle can be laser engraved with desired logo. Straps are one size and can be cut to fit. (style# 014052)

Colors: **Min 50**

Many colors to choose from

